

Hoya albida Kloppenburg, Siar, Cajano & Carandang 2012
ISSN 10055-4564

Hoya albida Kloppenburg, Siar, Cajano & Carandang sp. nova typus 71808 (CAHUP) hic designatus. Cymis umbelliformibus, pedicellis glabris, strictus 1.8 cm longis, albida, teretem, floribus in genere inter minores, albidus; calyces segmentis lanceolata glabris 0.12 cm longis et 0.08 cm latis; corolla rotata, penta-lobata, usque infra medium, lobis ovato triangularis, 0.92 cm diametro, extus glabram, intus uniformiter papilosa; coronae lobis anteriore spatulate, posterior adsentibus subobtusis, dorso concavis, pagina subtiliter sulcatis, subtus usque ad basin caniculatis, polliniis parvus, 0.25 mm longis, translatoribus deltatus, retinacula 0.10 mm longis.

This species of hoyo has a small whitish flower with an upright corona in a white rotate deeply cut corolla, the pollinarium is also relatively small. The floral parts are shown below with appropriate measurements and comments.



Pedicel: section enlarged ca. 40X. 1.8 cm long, white color, strict, terete, glabrous 0.06 cm in diameter.



Flower: including the calyx and pedicel section enlarged ca. 16X. The sepal apices do not reach the corolla sinuses.

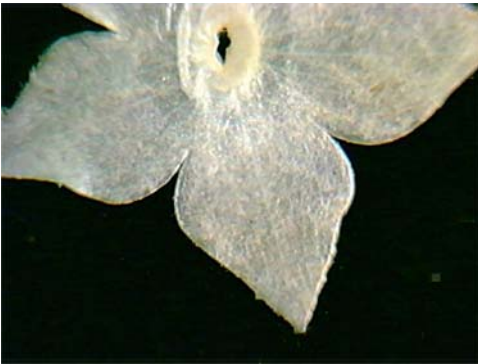


Calyx: side view enlarged ca. 16X. The sepals are granulose outside, slick glabrous inside, somewhat linear-triangular 0.12 cm long and 0.08 cm at the widest.



Top inside view of a calyx, lobes very little overlap at the base, edges with a few scattered cilia. No ligules seen.

Ovaries: narrow columnar, glabrous 0.11 cm tall and 0.03 cm wide at pair base.

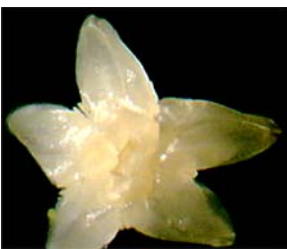


Corolla: outside surface enlarged ca. 10X. This surface is white, finely granulate, glabrous, lobes are more than half way cut, broadest out from sinuses, apex acute, center with a short column, 0.08 cm in diameter 0.05 cm deep.

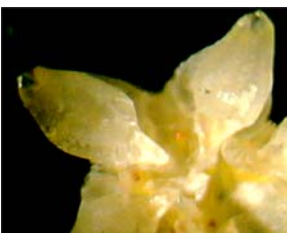


Corolla inside surface view enlarged as above. Surface us finely granulate to finely puberulous all over.

Sinus – sinus	0.24 cm
Sinus – center	0.18 cm
Sinus – apex	0.33 cm
Apex – center	0.46 cm.
Widest	0.30 cm



Corona: bottom view enlarged ca. 20 X. Surfaces are glabrous, lobes are channeled to near the central thickened column, outer apices subacute. Anther wings with rounded apices.

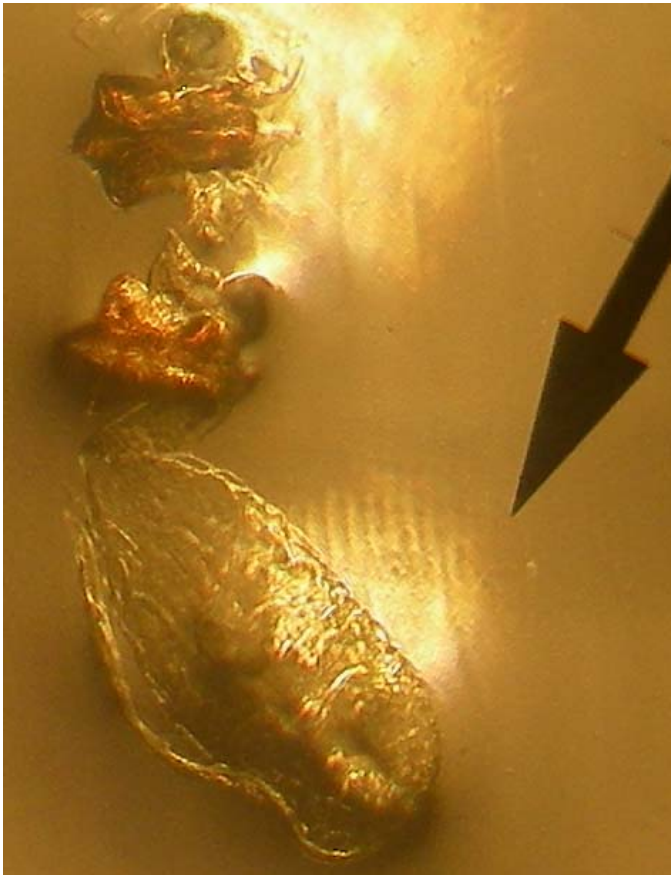


Top (inside) view of the part of a corona, the outer lobes are steeply raised outside, dorsal sway backed and concave with narrow rather sharp edges, inner lobes raised a little and spatulate, actually nearly touch in the center.

Apex – apex	0.12 cm
Widest	0.06 cm
Ret – ret.	0.04 cm
Ret – center	0.04 cm
Aw. – aw.	0.08 cm
Aw. – center	0.08 cm



Individual corona scale side view enlarged ca. 65X, outer apex of lobe greatly raised above the center, edges of dorsal narrow and sharp, anthers (below right) are longer than the inner coronal lobe but mostly covered by it. Surface of scale, except inner lobe finely sulcate.



Two Retinacula with translators and one Pollinium enlarged ca 330X.

Pollinium

length	0.25 mm
widest	0.09 mm

Retinaculum

length	0.10 mm
shoulder	0.08 mm
waist	0.04 mm
hip	0.05 mm
ext.	0.02 mm

Translator

length	0.05 mm
depth	0.02 mm

Ratios: p/r 2.5 p/w 2.8

Translator /caudicle type: d/o

Leaves: petiolate, opposite, glabrous, plinerved, sub-ovate - cuneate, base obtuse, apex apiculate, nerves lighter than leaf surface.



12. Quezon 3-102

Leaf sample	Length (cm)	Width (cm)	Thickness (cm)
1	13.5	4.8	0.140
2	12.2	4.0	0.170
3	10.8	3.6	0.170
4	11.8	4.4	0.160
5	9.0	3.5	0.195
6	8.5	3.4	0.195
7	12.3	4.5	0.150
8	12.1	3.9	0.130
9	7.7	4.9	0.170
10	8.7	3.6	0.170
Mean	10.7	4.1	0.165
Range	7.7-13.5	3.4-4.9	0.130-0.195

Hoya sp., collection number Quezon 3-102 via Monina Siar, 16 May 2011, processed 11 June 2011, 9 flowers in zip bag.



Reduced Photo of Type sheet 71808 (CAHUP)