

Hoya bicolensis Kloppenburg, Siar & Cajano 2012
ISSN 10055-4564

Hoya bicolensis Kloppenburg, Siar & Cajano sp. nova, Typus JP 1994 (UC) similes *Hoya camphorifolia* Warburg 1904 sed coronae stamineae lobis externo acuto non obtuso; sepala late triangulis non lanceolatis subacutis. Corolla 1/3 grandem 0.94 cm. vs. 0.60 cm. Pedicellis 1.5 cm longus, 0.6 cm diametro; foliis glabris ovato 7,80 cm longis 3.6 cm latis apice subacuminatus acutis basi rotundatis quntuplinervis reticulatis distinctis. Sepalis 0.11 cm longis et 0.10 cm latistriangularissubacutis glabrous; corolla 0.9 cm diametro extus glabra, intus pubescente; coronus ellipticus navicularibus, supra concavis, apice interno erecto dentate, externo acuto emarginate, dorso margo et centro carinato.

The major difference in the two species compared above is that the ends of the outer lobes corona are acute not obtuse and that the sepals are broadly triangular and do not reach the corolla sinuses whereas with *Hoya camphorifolia* Warburg the sepals are lanceolate (nearly linear) and reach or exceed the corolla sinuses. As with the comparative species this new species flowers stay open at the most only 2 days.



Pedicel: enlarged about 25X. 1.5 cm long x 0.06 cm in diameter, glabrous, strict, terete, enlarges slightly as it proceeds to the calyx.



Outside view of the flower enlarged about 8X, The sepals do not reach the corolla sinuses. Note the tapered pedicel, corolla outside is glabrous.

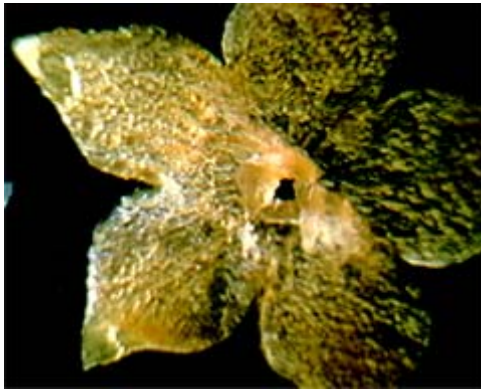


Calyx: side view enlarged about 8X. Sepals are triangular 0.11 cm long and 0.10 cm at the widest. Granulate outside and slick glabrous inside.

Ovaries: dome shaped 0.11cm tall and base pair 0.08 cm wide, surfaces are glabrous.



Corolla: outside surface enlarged about 8X. Surface is granulate, glabrous, center is raised and thickened. Lobes are widest just above the corolla sinuses.



Inside surface of the corolla enlarged as above. This surface is pubescent, less so near the raised and thickened central column.

Sinus – sinus	0.23 cm
Sinus – center	0.20 cm
Sinus – apex	0.34 cm
Apex – center	0.47 cm
Widest	0.29 cm

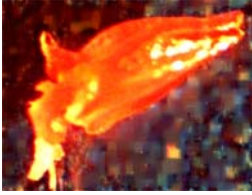


Under side of the corona enlarged about 8X, the lobes are evenly channelled, diagonally sulcate, there is a central thickened column is well developed ca. 0.05 cm tall.



Top view of the corona, outer lobes acute, inner lobes dentate and do not reach the center, surfaces glabrous, dorsal with center raised (keeled) edges raised in distinct pattern.

Apex – apex	0.24 cm
Apex – center	0.27 cm
Ret. – ret.	0.07 cm
Ret. – center	0.06 cm
Aw. – Aw.	0.12 cm
Aw. – center	0.12 cm



Side view of a scale enlarged about 16X. Outer apex emarginate and acute also raised a little. Inner lobe sharply curves up and is dentate, anther wings deeply scythe shaped. Sides of lobes a little concaved. Surfaces glabrous.

Pollinarium enlarged about 165X.



Pollinium

length 0.35 mm
widest 0.15 mm

Retinaculum

length 0.08 mm
shoulders 0.08 mm
waist 0.05 mm
hip 0.07 mm
extensions 0.01 mm

Translator

length 0.07 mm
widest 0.03 mm
depth 0.01 mm

Caudicle

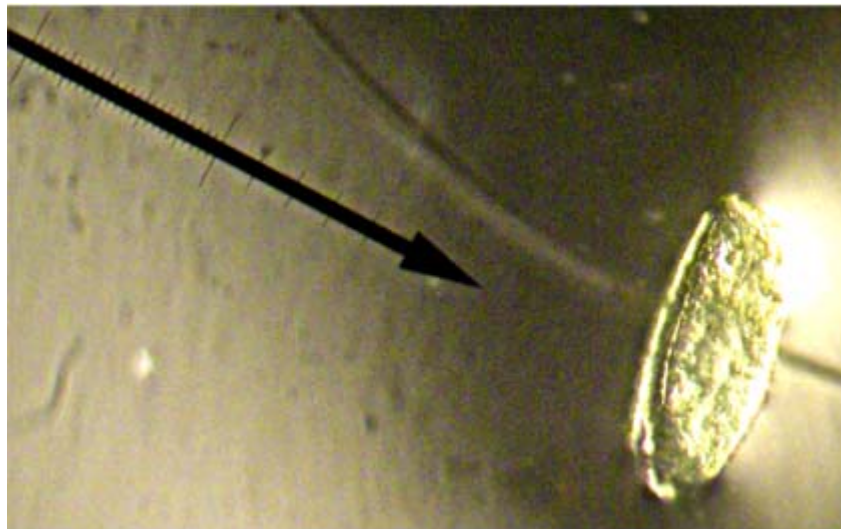
bulb diam. 0.03 mm

Ratios: p/r 4.4 p/w 2.3

Translator/caudicle type: p/o



Two photos above with more detail of the pollinarium parts.





Foliage: opposite, petiolate, glabrous, ovate, triplinerved, apiculate, nerves lighter than the leaf color, anastomosing. Nerve angle ca. 20° to the midrib.

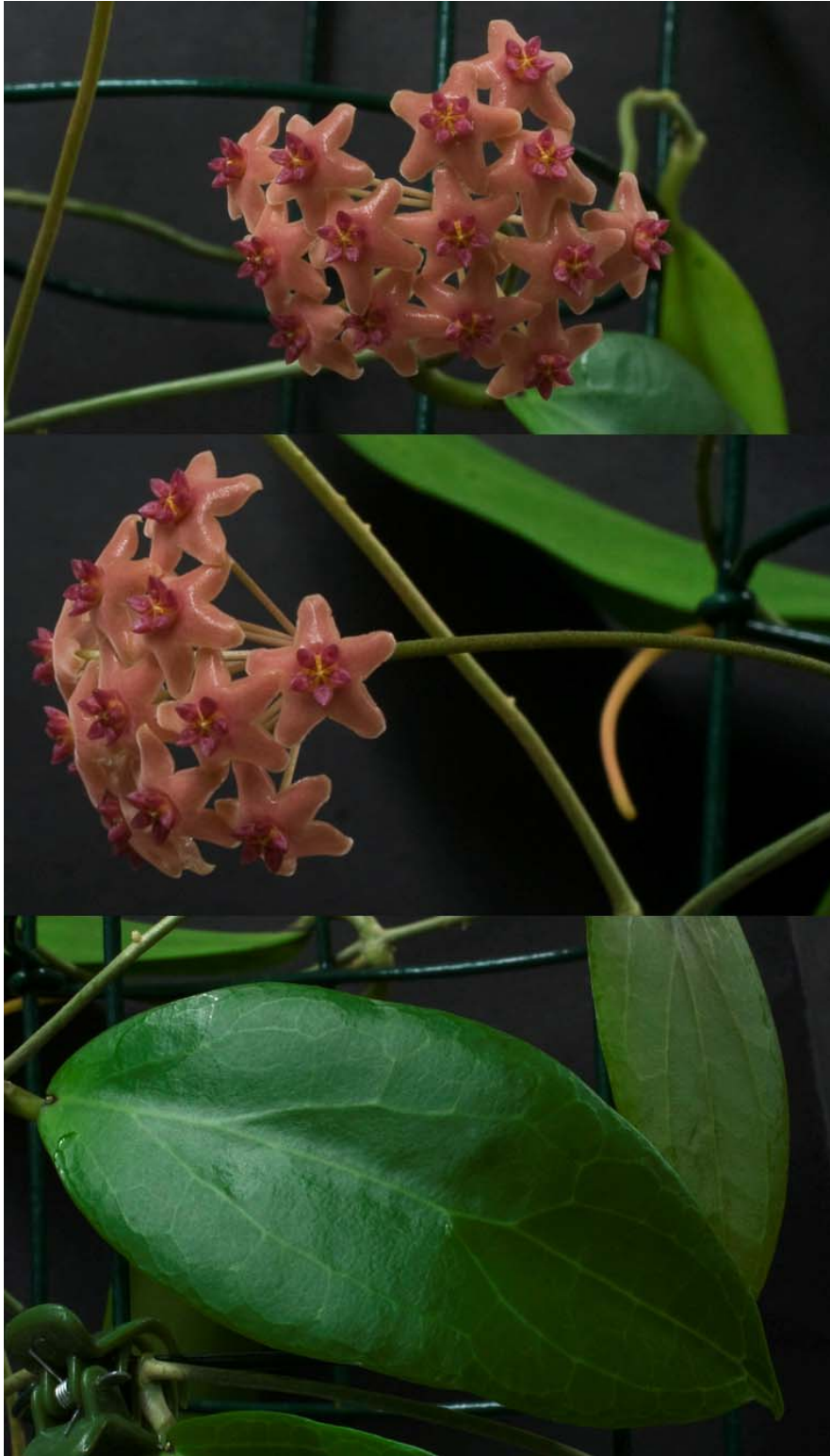
Leaf measurement data in chart below.

Leaf sample	Length (cm)	Width (cm)	Thickness (cm)
1	7.10	3.50	0.135
2	9.30	3.50	0.210
3	4.80	2.50	0.125
4	7.60	4.10	0.185
5	10.20	4.40	0.180
Mean	7.80	3.60	0.167
Range	4.80-10.20	2.50-4.40	0.125-0.210

*only 5 leaves were available

References:

1. Philippine Hoya species by Dale Kloppenburg. Eleventh edition 2009 Modified 22 August 2011, 704 pages.
2. Hoya camphorifolia Warburg in Perkins Fragmentia Florae Philippinae 1 (1904) 129.
3. The Asclepiadaceae Works of Friedrich Rudolf Schlechter (1992) by A. Nichols.
4. A. E. D. Elmer Hoya camphorifolia in Leaflets of Philippine Botany 10 (1928-39) 3577.
5. Hoya camphorifolia in Enumeration of Philippine Flowering Plants 3 (1923) 351. E. D. Merrill.



Picture sent via Torill Nyhuus, Sweden on 31 August 2011.